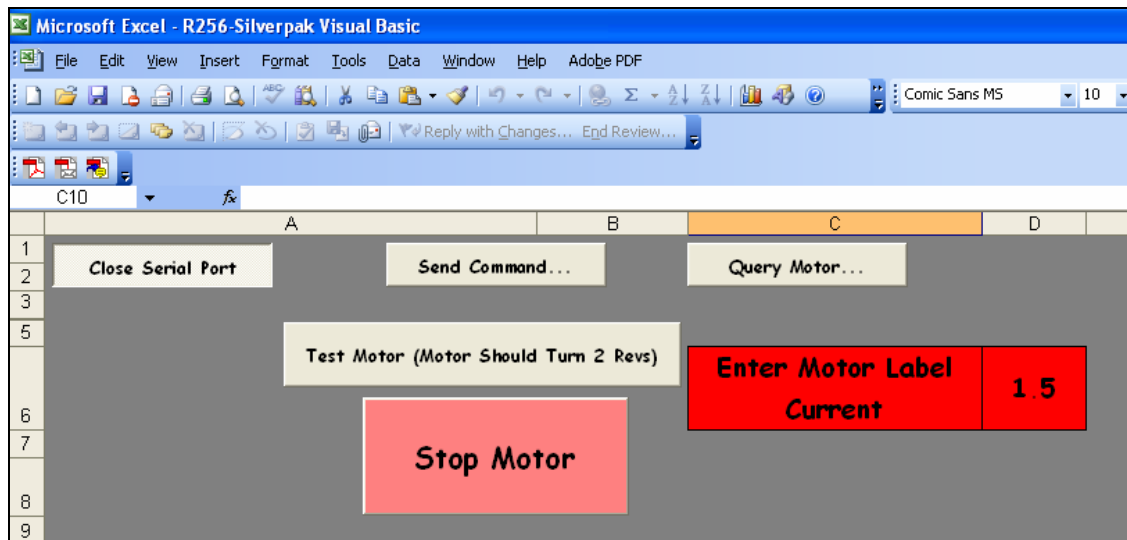
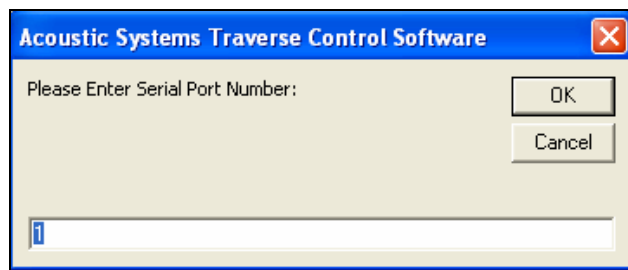


This file will explain what the excel file *R256-Silverpak Visual Basic* does.

The sample excel file shows users how to set up their Visual Basic programming for rotating the motor, stopping motion, queries and setting the motor current (Amps).

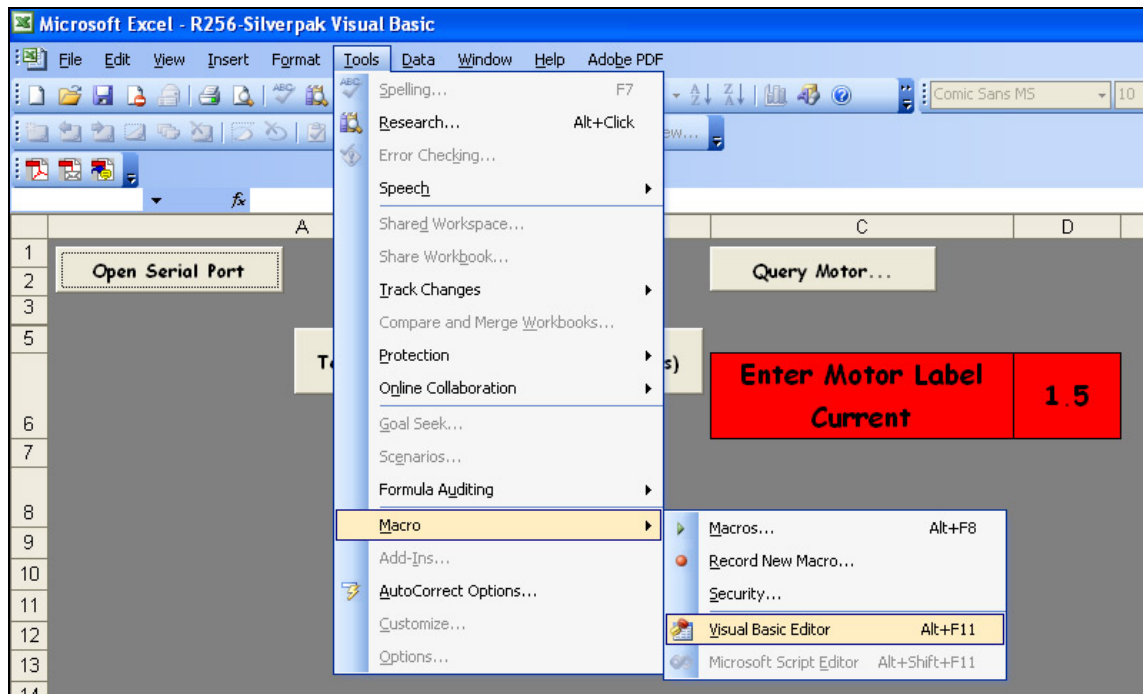


First select the correct Serial COM port by clicking on *Close Serial Port*. The window below should pop up:



Click on *Test Motor (Motor should Turn 2 Revs)* to see if connection has been made.

To view the Visual Basic Programming, go to Tools → Macros → Visual Basic Editor.



Here you can see how to program in Visual Basic. Below is the example of how to send a query.

```
Function SendMotorQuery(ByVal strCmd As String) As String
    Dim strSend As String
    Dim lngSize As Long
    strSend = "/" & strCmd & "R" & Chr(13)
    lngSize = Len(strSend)
    lngStatus = CommWrite(intPortID, strSend)
    Delay
    If lngStatus <> lngSize Then
        Call MsgBox("Send Error")
    End If
    SendMotorQuery = RcvMotorStr()
End Function
```