



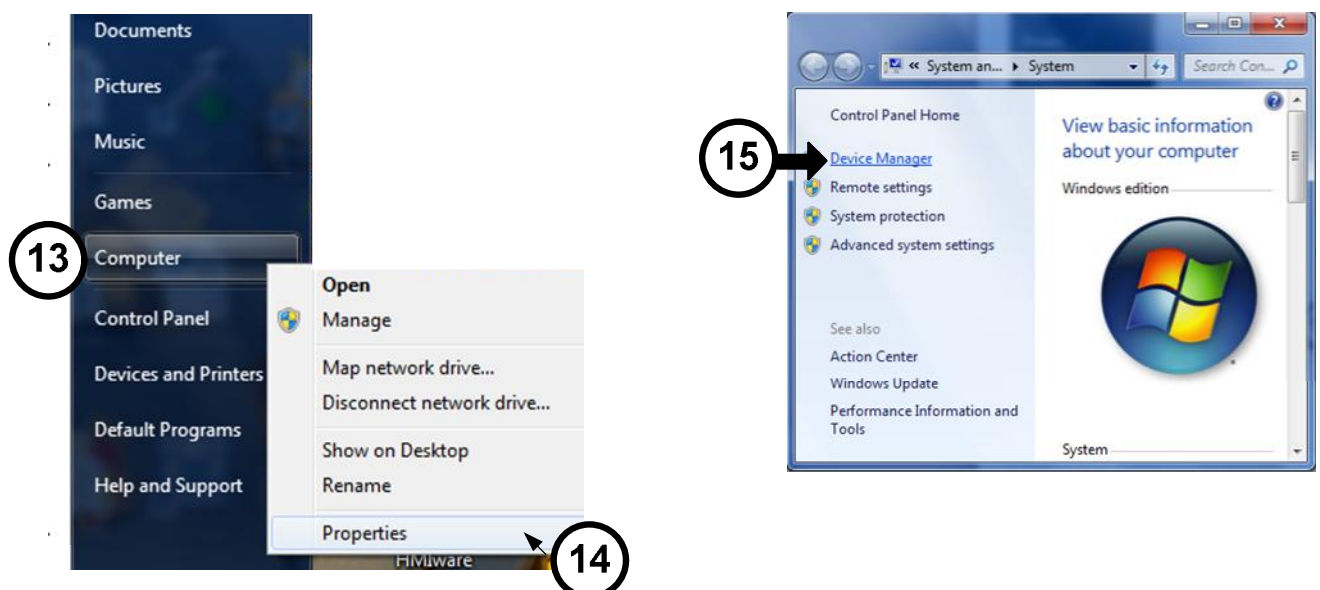
Manual for Silicon Laboratories CP210x USB to UART Bridge (for Windows 7)

1) Run installation file for driver: CP210x_VCP_Win2K_XP_S2K3

It is not necessary to connect SMSD controller to computer during this step.



12) After driver installation it is necessary to connect SMSD controller to USB port of computer and check the driver.

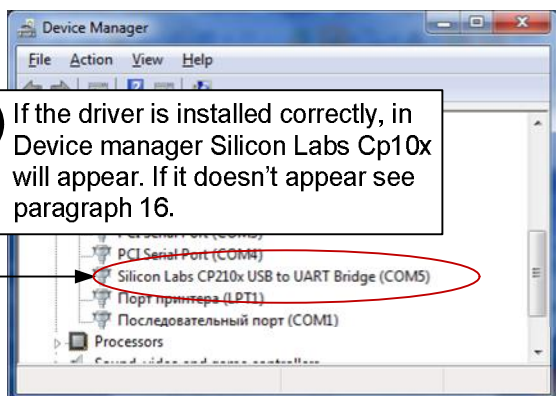




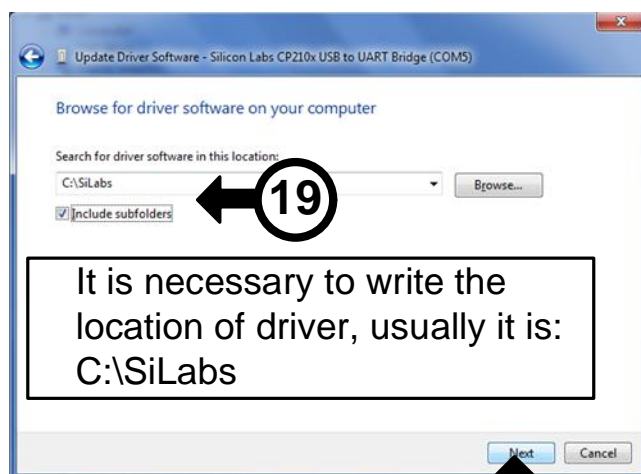
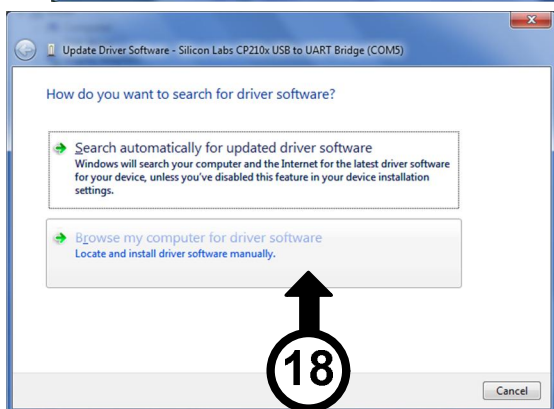
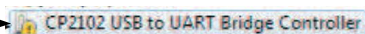
SMART MOTOR DEVICES

www.steppmotor.biz

16 If the driver is installed correctly, in Device manager Silicon Labs Cp10x will appear. If it doesn't appear see paragraph 16.



17 If driver is not founded and is in "Other Devices" it is necessary to reinstall the driver manually.



It is necessary to write the location of driver, usually it is: C:\SiLabs

21) If driver is installed successfully the device will appear in device manager – see paragraph 15.

22) After that it is necessary to set right COM number in SMC_Program (see SMC_Program manual).